

[www.primeralabel.com](http://www.primeralabel.com)

763-475-6676

Primera Tech Support:

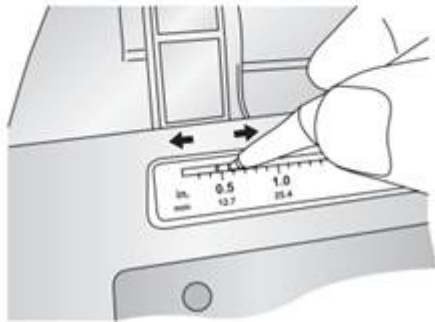
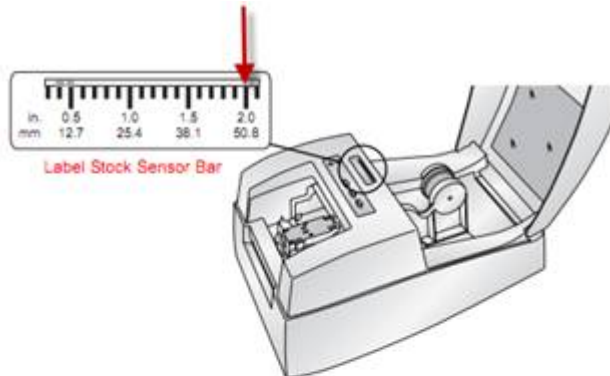
[http://www.primeralabel.com/contact\\_tech\\_support.php](http://www.primeralabel.com/contact_tech_support.php)

763-475-6669

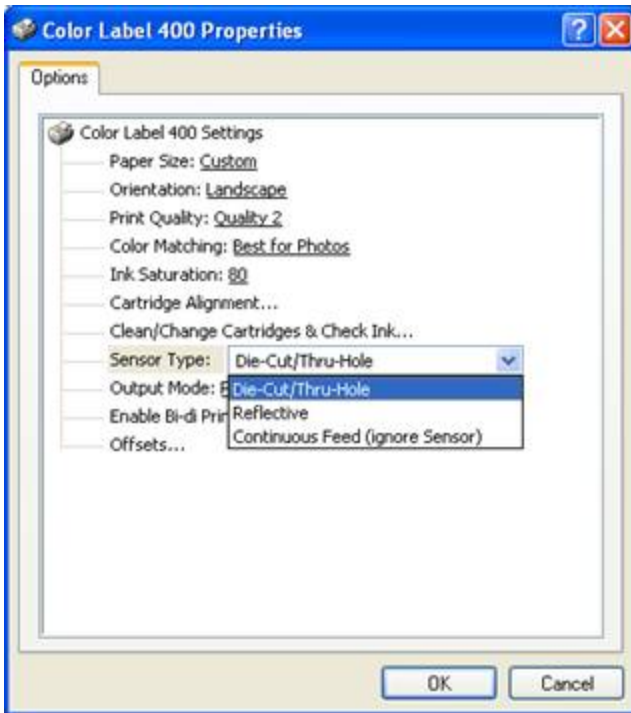
[support@primera.com](mailto:support@primera.com)

## How to print Visitor Pass Solutions using a Primera LX400

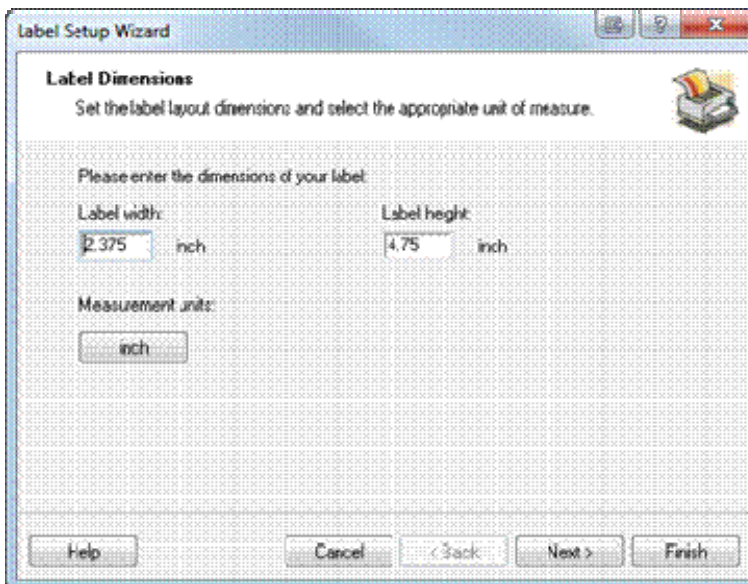
1. Set the label sensor position to 2.0" (all the way to the right).



2. Set the sensor Type to Die Cut Through Hole.



3. Set the label size in your printing application to 2.375 x **4.75"**. This is the full height of the label including the fold under tab. This is important! The printer needs to know the full height of the label so that it will know when to start looking for the next label. If you set it to 4", it starts looking too early. You then may have variable print starting positions. You may have to adjust the placement of the printable area on the label so that there is approximately .75" of unprinted space on the label. This will leave space for the fold under tab. See below.



**St. Anthony Health Services**

**VISITOR**

Friday, August 18, 2006  
11:15 am

**4th Floor, Radiology**

*Alison L. Wrightman*



.75" of space