



Visitor Management Systems

Badges 2025

For Direct Thermal and Inkjet Printers



For use with **eVisitor Software** and other Visitor Management Systems



TAB-Expiring



FULL-Expiring



Tandem-Expiring



Also available for
INKJET printers

Easy

activation with Visitor Badges



3" x 2" badge

Exact dimensions = 2.8125" x 1.9375"
(tab not included)
2.9" dia. roll, 1" core

\$229 per pack of 1,000

(4 rolls of 250 badges each)

Product #VDTT3

4" x 2" badge

Exact dimensions = 4" x 2.125"
(tab not included)
3.2" dia. roll, 1" core

\$270 per pack of 1,000

(4 rolls of 250 badges each)

Product #VZBT4

The badge



One-piece design simplifies activation.



Maximum with Visitor Badges



3" x 2" badge

Exact dimensions = 2.8125" x 1.9375"
2.75" dia. roll, 1" core

\$294 per pack of 1,000

(4 rolls of 250 badges each)

Product #VDTF3

(includes badges and Back Pieces, see below)

4" x 2" badge

Exact dimensions = 3.9375" x 2.125"
3.1" dia. roll, 1" core

\$340 per pack of 1,000

(4 rolls of 250 badges each)

Product #VZBF4

(includes badges and Back Pieces, see below)



The entire badge

to prevent reuse!

Apply the badge to the separate back piece (included) to activate the overnight color-changing process.



back piece.



back piece. Specify the color of your Clip-On Back Piece:
with "VISITOR" (red, gray, green, orange, pink, purple or blue) or
without (red, green, or white).

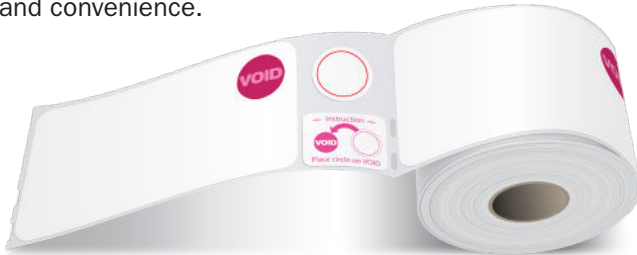
All colors not available in the 3" size.



Badge is simple,
affordable and secure.



Built-in activation provides security and convenience.



For **Inkjet** Printers

Works with **COLOR**
inkjet printers like
Epson and **Primera**

Attached tab folds behind the label.

4" x 2"

Exact dimensions = 4" x 2.3125";

4" dia. roll, 2" core

Product #VIJT4-4RL

\$299 per 1,000 badges

3" x 2"

Exact dimensions = 2.8125" x 1.9375";

3.6" dia. roll, 2" core

Product #VIJT3-4RL

\$242 per 1,000 badges



4" x 2" badge

Exact dimensions = 4" x 2.125"

3.375" dia. roll, 1" core

\$206.05 per pack of 1,000

(4 rolls of 250 badges each)

Product #VDT-TM4

The badge



The Front Piece **DOT** hides the expiration image until the next day.

To activate the color-changing process, place the Front Piece Dot over the expiring image. The badge will **EXPIRE OVERNIGHT**.

Front Piece applies to the Back Piece
(worn with your choice of adhesive or
clip-on Back Piece, included).

4" x 2"

Exact dimensions = 3.9375" x 2.3125";

3.5" dia. roll, 2" core

Product #VIJF4-4RL

\$360 per 1,000 badges

3" x 2"

Exact dimensions = 2.8125" x 1.9375";

3.38" dia. roll, 2" core

Product #VIJF3-4RL

\$299 per 1,000 badges



Prices subject to change without notice.